



BROADLOOM SPECIFICATIONS



Style Name Brain Power
 Style Number GL136
 Collection Mind Over Matter
 Product Type Broadloom
 Construction Tufted
 Surface Texture Textured Patterned Loop
 Gauge 1/12 (47.00 rows per 10 cm)
 Density 6,792
 Weight Density 135,840
 Stitches Per Inch 10.0 (39.37 per 10 cm)
 Finished Pile Thickness .106" (2.69 mm)
 Dye Method Solution Dyed/Space Dyed
 Backing Material Unibond Flex
 Face Yarn Duracolor® Premium Nylon
 Fiber Technology Duracolor® by LEES Stain Resistant System.
 Passes GSA requirements for permanent stain resistant carpet.
 Face Weight 20 oz. per sq. yd. (678 g/m2)
 Pattern Repeat 18" (W) x 20.6" (L)
 Protective Treatment .. Sentry Plus
 IAQ Green Label Plus . 9226
 CRI Rating Heavy Traffic
 Static AATCC 134 Under 3.5 KV
 Flammability ASTM E 648 Class I (Glue Down)
 Flooring Radiant Panel..Meets NFPA Class 1 when tested under ASTM E-648 glue down
 Smoke Density ASTM E 662 Less than 450
 Warranties Lifetime Limited Unibond Flex Warranty, Lifetime Duracolor Stain Warranty, Lifetime Static



138 CRAFTINESS



268 INGENUITY



566 FLAIR



589 CREATIVITY



659 WORKMANSHIP



678 EXPERTISE



728 VISION



845 TALENT



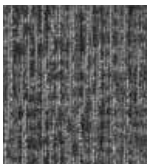
858 TRADE



936 TECHNIQUE



988 MASTERY



989 SKILL